

Far South Halsted Corridor Study Public Meeting Materials

RTA/Pace | February 26, 2025



PURPOSE

Share outreach materials to be used for the upcoming public meeting.

Public Meeting Materials

FAR SOUTH HALSTED CORRIDOR STUDY
Existing Conditions: Infrastructure

ACCESS TO TRANSIT AND BUS STOPS

- Existing sidewalk infrastructure on Halsted
- Sidewalk condition
- There are no bicycle/bicycle signage in the corridor
- Bus stop amenities

FAR SOUTH HALSTED CORRIDOR STUDY
Opportunity Sites

Map showing 12 opportunity sites along the corridor, each with a circular inset photo. Sites include: 1. 140th & Halsted St, 2. 145th & Halsted St, 3. 150th & Halsted St, 4. 155th & Halsted St, 5. 160th & Halsted St, 6. 165th & Halsted St, 7. 170th & Halsted St, 8. 175th & Halsted St, 9. 180th & Halsted St, 10. 185th & Halsted St, 11. 190th & Vincennes Ave, 12. 195th & Vincennes Ave.

Exhibit Boards

Public Meeting Comment Sheet
MARCH 4, 2025

Sign-In Sheet

Name	Connection to Far South Halsted	Email

Lucas Reigstad
Pace Suburban Bus

Mark the infrastructure features you would like to see within the corridor or use the sticky notes to share a new idea.

- Bike Infrastructure
- Pedestrian Infrastructure
- Bus Stop Infrastructure
- Residential Development
- Recreation/Entertainment
- Commercial Development
- Pace Pulse Station

Experiential Materials

Welcome to Public Meeting
PROVEN IT ROOM

Public Meeting
PROVEN IT ROOM

Wayfinding

Exhibit Boards

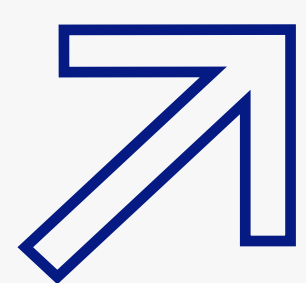
About the Study

Pace and RTA are conducting a study to examine land use and identify potential transportation, bicycle, and pedestrian infrastructure improvements along the South Halsted Street corridor between the Pace Harvey and Chicago Heights Transportation Centers. This study will help Pace prepare the corridor to support more transit service in the future.

OBJECTIVES



DEVELOP Strategies for Pace and Municipalities to Prepare the Corridor for Future Pace Pulse Service



INCREASE Transportation Resilience

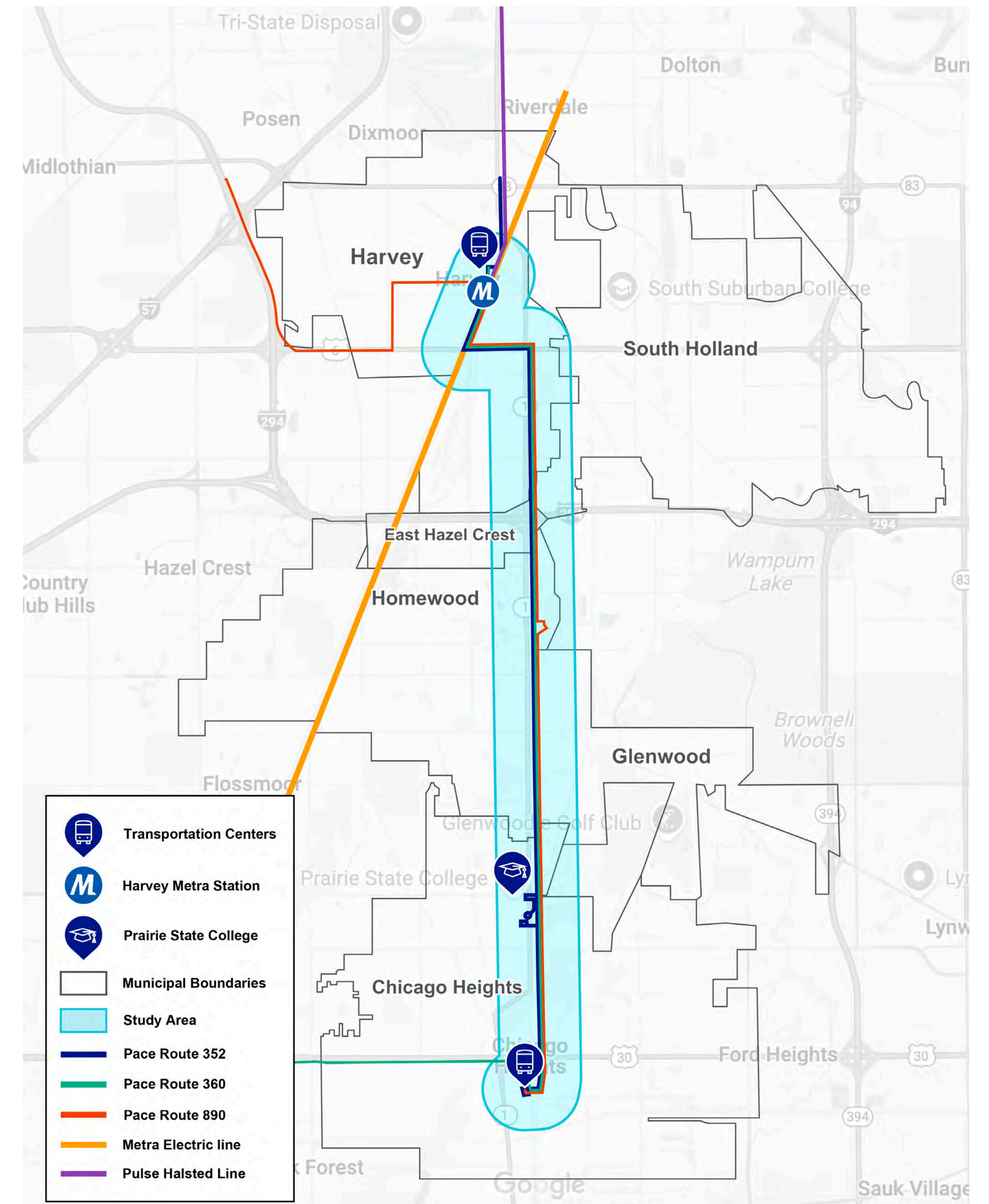


ENCOURAGE Transit Oriented Development (TOD)



IMPROVE Walkability and Bicycle Access by Improving Pedestrian Facilities

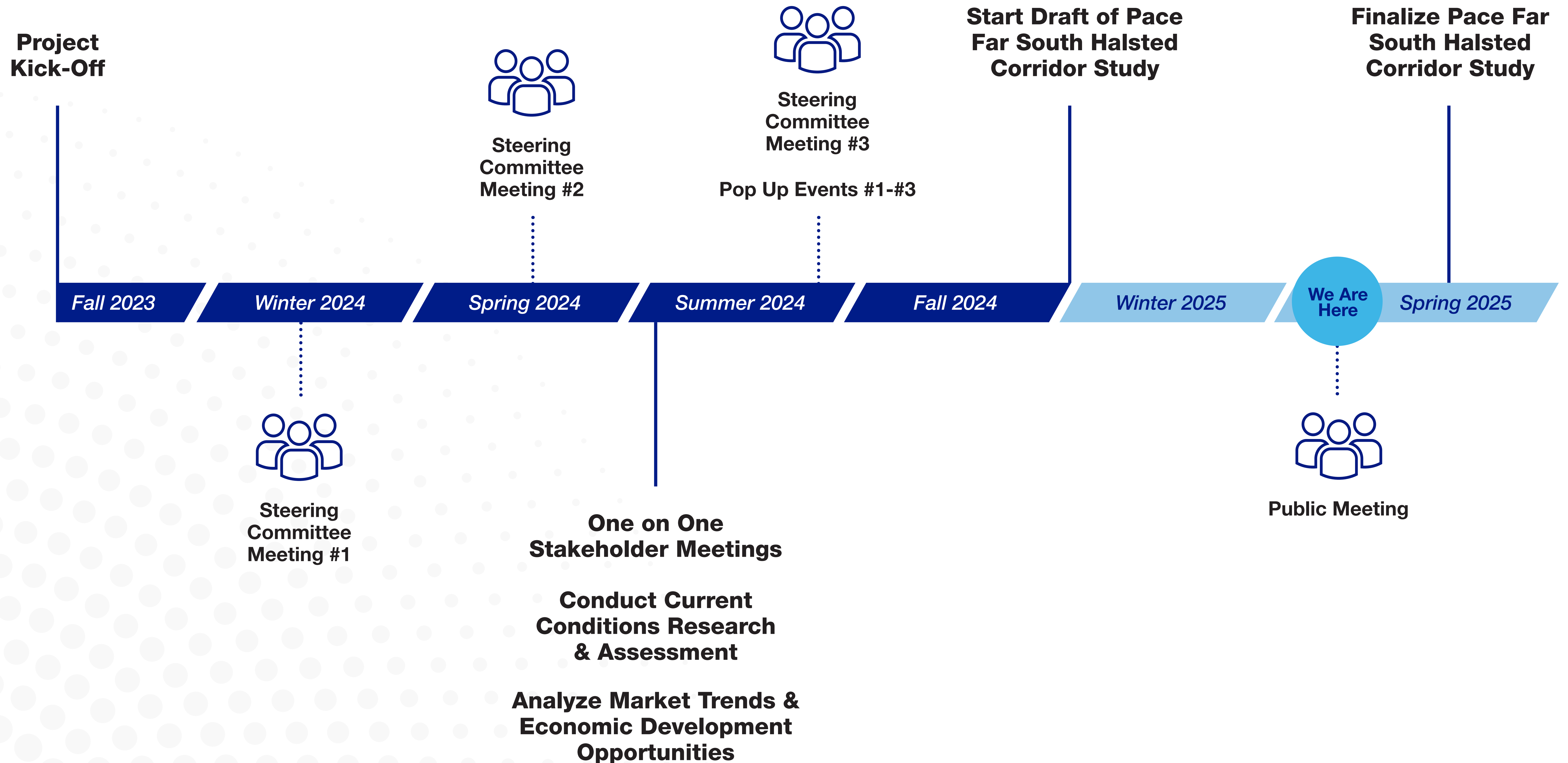
Project Area



In collaboration with



Project Schedule



Existing Conditions: Infrastructure

ACCESS TO TRANSIT AND BUS STOPS

- **Existing sidewalk infrastructure on Halsted**
 - 53.3% of the Halsted corridor has no sidewalks
- **Sidewalk condition**
 - Good: 20%
 - Adequate: 38%
 - Poor: 42%
- **There are no bicycle facilities nor bicycle signage in the study corridor**
- **Bus stop amenities**
 - 73 stops with a mix of sign and shelters or sign only



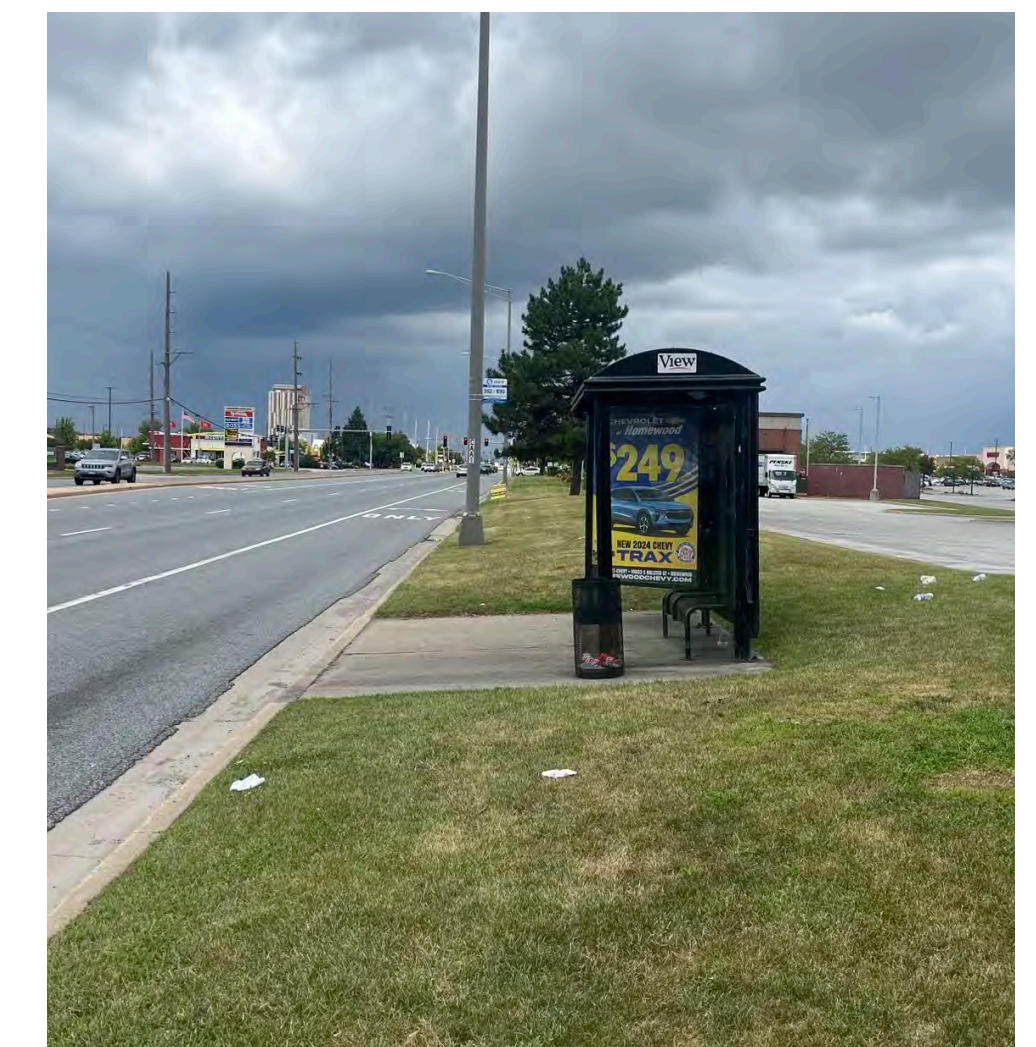
Poor condition



Good condition



No sidewalks present



No sidewalks present



Adequate condition

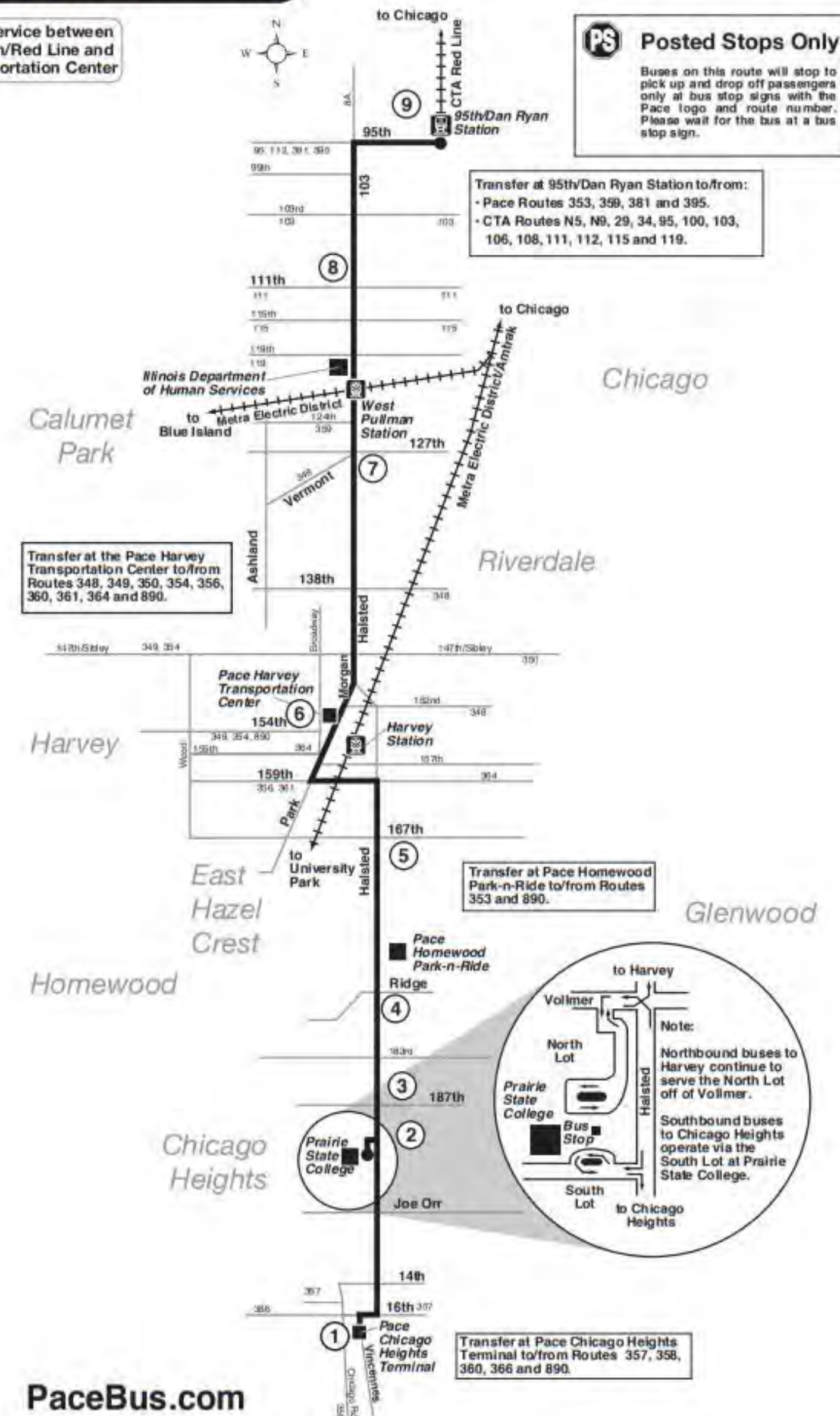


Poor condition

Existing Conditions: Pace Service

Route 352 Effective Date November 10, 2022

Night Owl Service between 95th/Red Line and Harvey Transportation Center



PACE ROUTE 352 HALSTED

• Characteristics

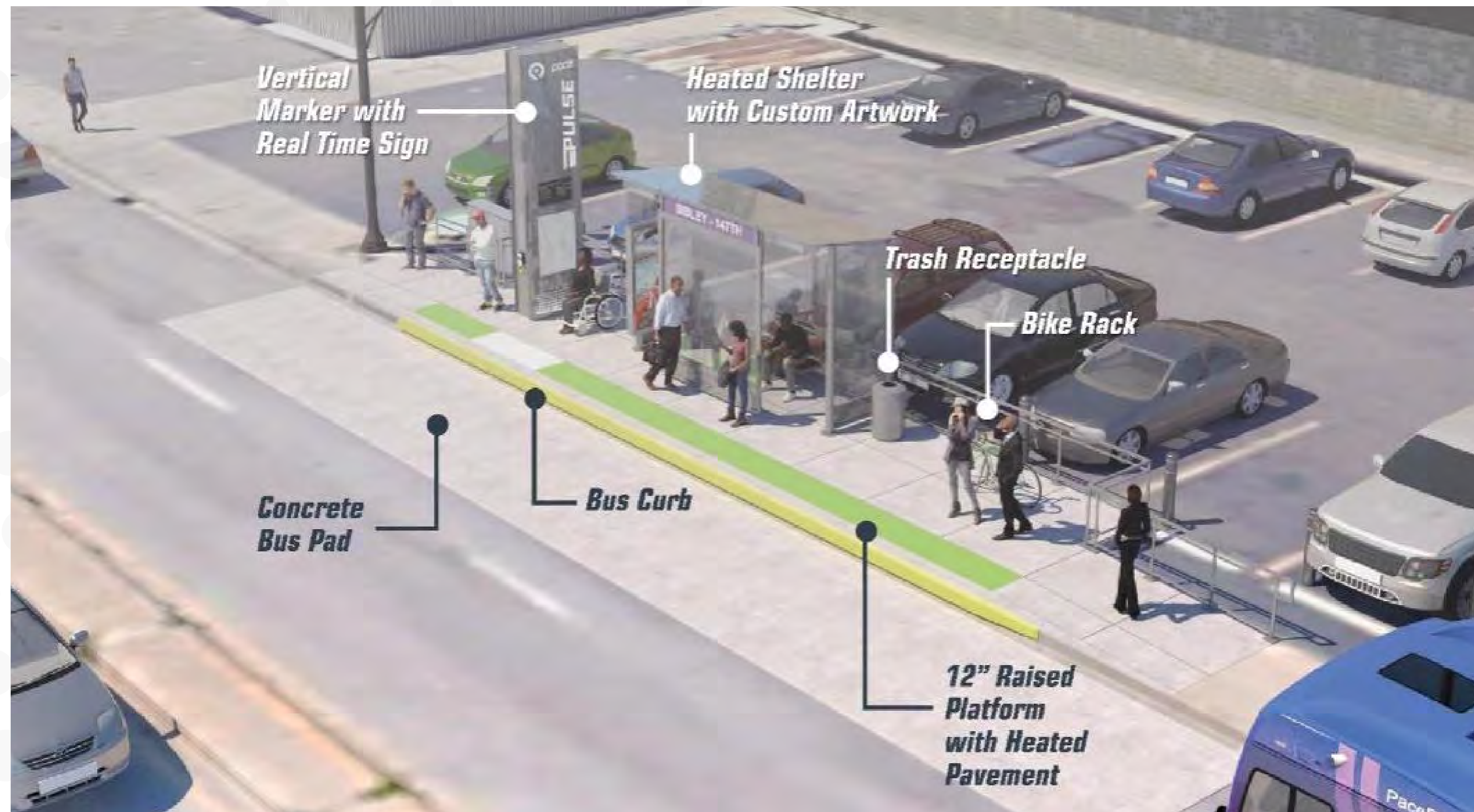
- Operates on Halsted Street
- Runs from 95th Street Red Line CTA to Chicago Heights
- 10-minute peak frequency
- Only Pace route with 24-hour service
- Highest daily ridership in the Pace system
- Daily ridership (October 2024)
 - *Weekday: 3,517*
 - *Saturday: 3,073*
 - *Sunday: 1,926*

OTHER PACE ROUTES

Name	Transfer Location
348 Harvey Riverdale Blue Island	Harvey TC
349 South Western	Harvey TC
350 Sibley	Harvey TC
352 Halsted	N/A
353 95th CTA - Calumet City - Homewood Limited	Homewood Park and Ride
354 Harvey - Oak Forest Loop	Harvey TC
356 Harvey - Homewood - Tinley Park	Harvey TC
357 Lincoln Highway	Chicago Heights TC
358 Torrence	Chicago Heights TC
360 Harvey - Amazon Monee	Chicago Heights & Harvey TC
361 Harvey Laraway - Crossings Express	Harvey TC
364 159th Street	Harvey TC & 159th St.
366 Park Forest - Chicago Heights	Chicago Heights TC
890 Chicago Heights - UPS Hodgkins Limited	N/A (parallels Route 352)

What is Pulse?

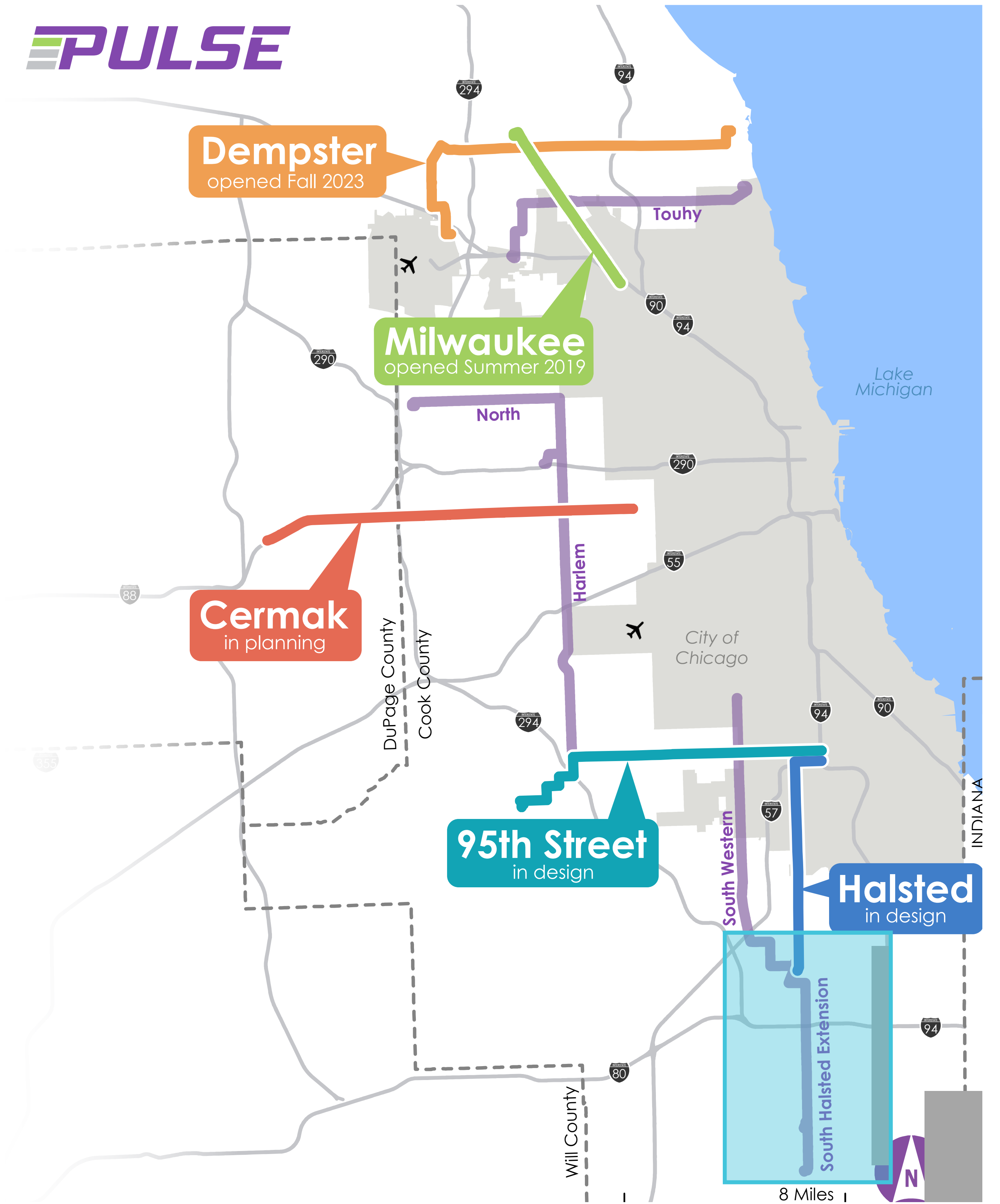
- A network of **fast, frequent*, and reliable** bus service in heavily traveled corridors (arterials)
- **Limited stop** service
- **Branded buses** with Wi-Fi and interior digital information screens
- Modern, easy-to-find **branded stations**
- Improved station accessibility and **ADA accessibility**



Background image source: Southwest corner of 147th and Halsted, Harvey, IL. Google Maps, 2019

*Less than 15 minute frequency throughout the day

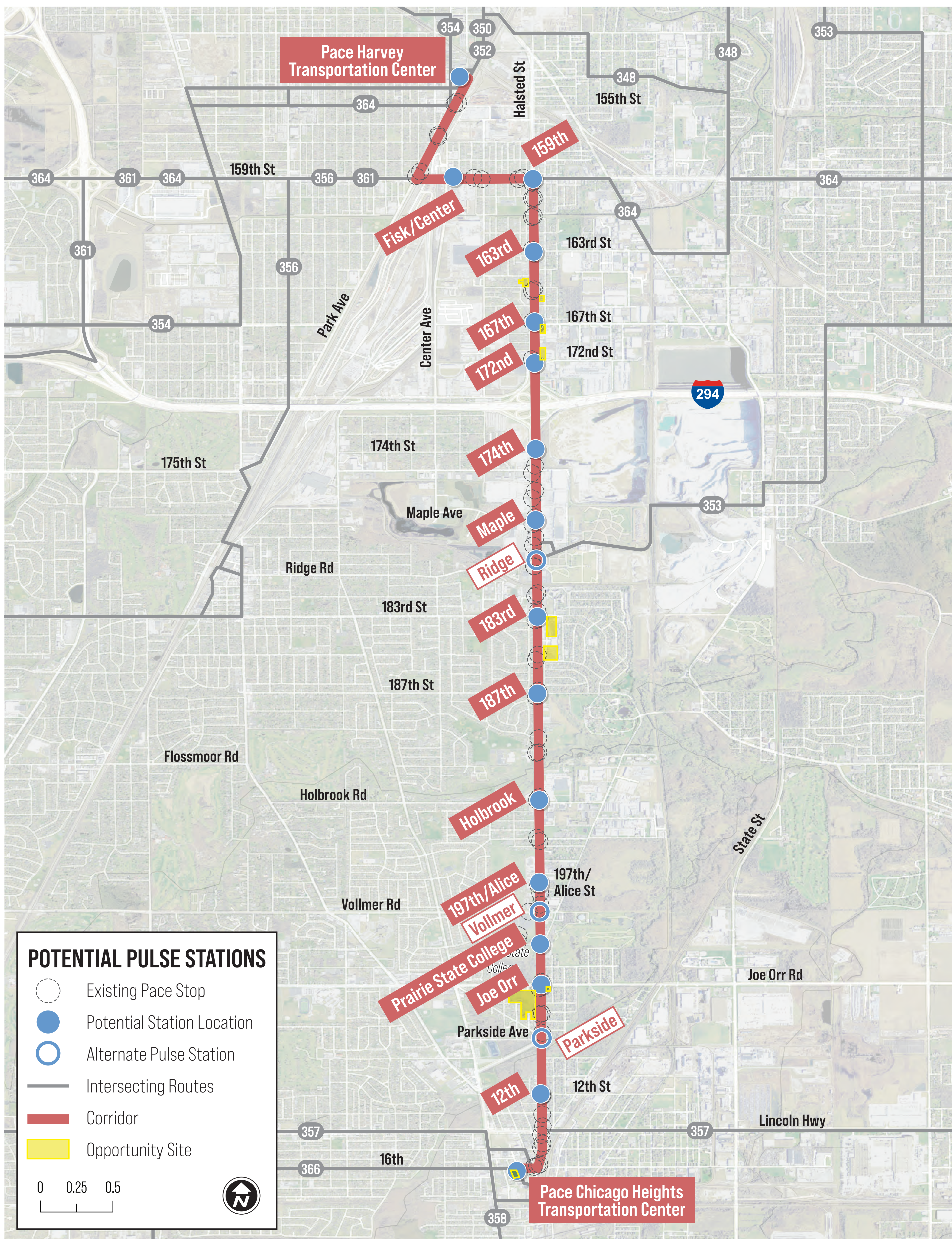
PULSE



In collaboration with

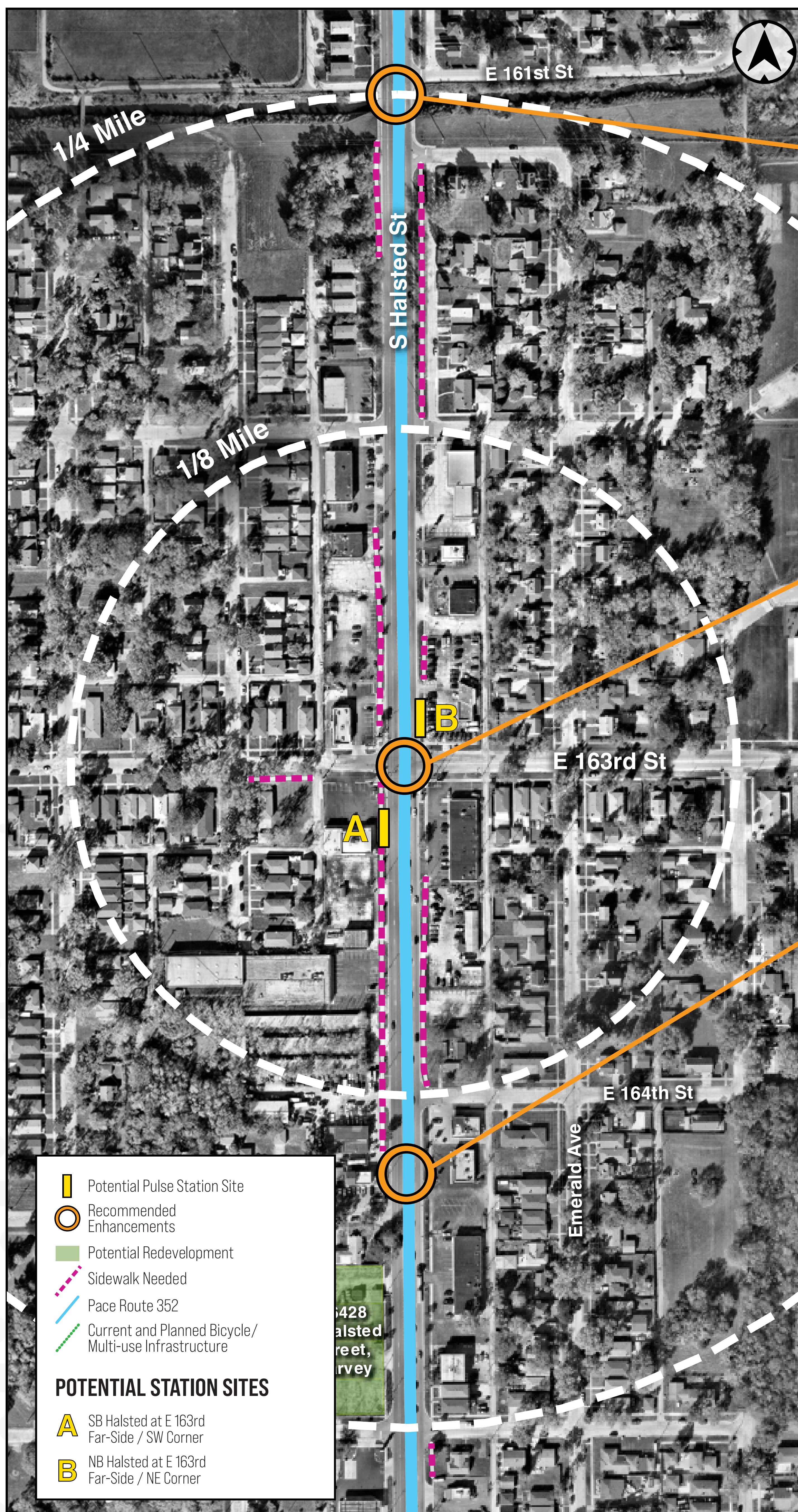


Potential Pulse Stations



Potential Infrastructure Improvements

S Halsted Street & E 163rd Street



POTENTIAL STATION SITES

A SB Halsted at E 163rd
Far-Side / SW Corner

B NB Halsted at E 163rd
Far-Side / NE Corner

PEDESTRIAN IMPROVEMENTS

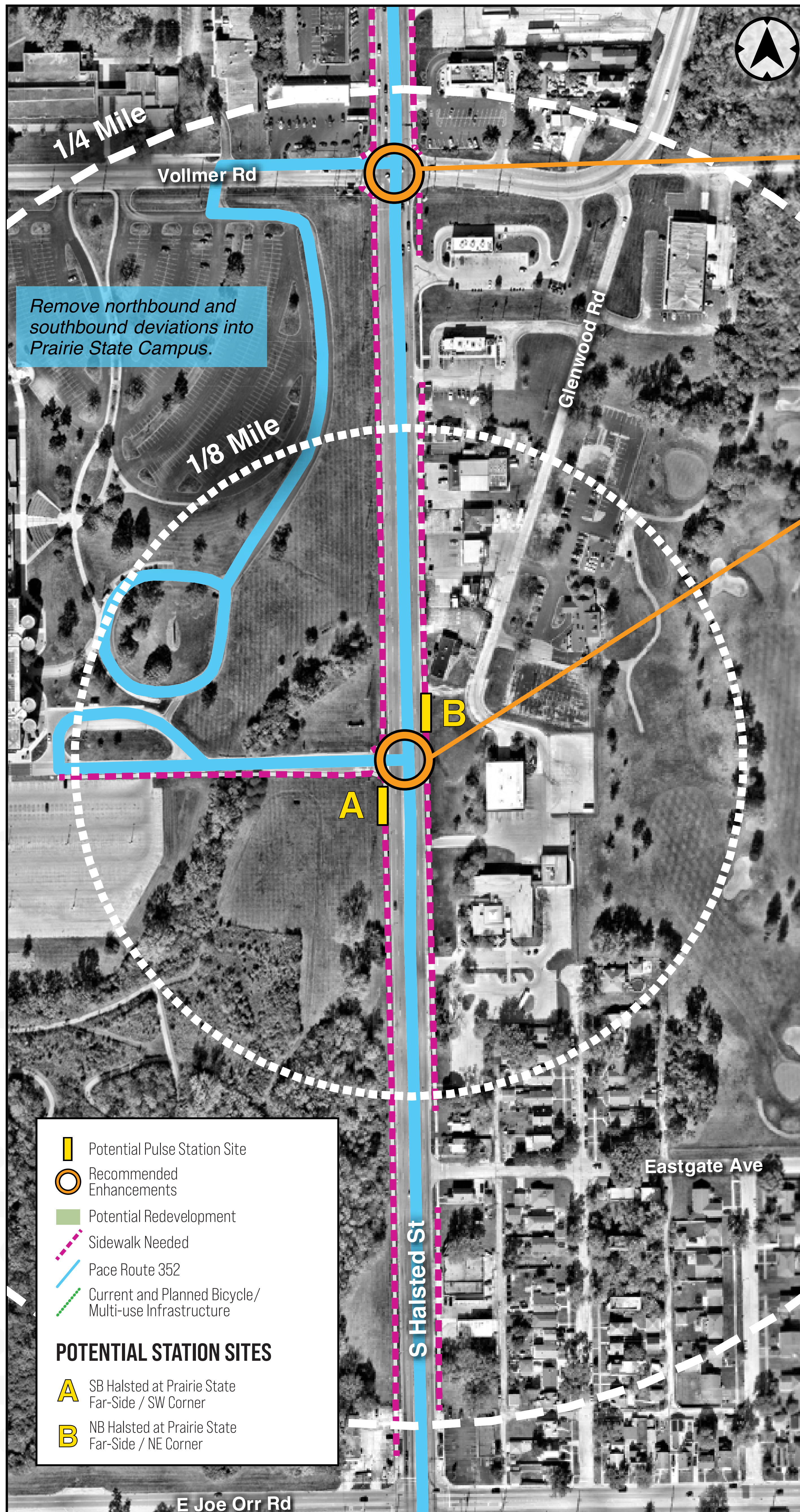
- Add crosswalks, curb ramps, and pedestrian signals to all four legs
- Add pedestrian refuge island to facilitate crossings

- Add high-visibility crosswalk markings to all legs and ensure that curb ramps are ADA compliant

- Add crosswalk and curb ramps to north leg of E 164th St and Halsted St to help address a large gap in pedestrian crossing opportunities
- Add pedestrian refuge island to facilitate crossings

Potential Infrastructure Improvements

S Halsted Street & Prairie State College



| Potential Pulse Station Site
○ Recommended Enhancements
■ Potential Redevelopment
 Sidewalk Needed
— Pace Route 352
 Current and Planned Bicycle/
 Multi-use Infrastructure

POTENTIAL STATION SITES

A SB Halsted at Prairie State
Far-Side / SW Corner

B NB Halsted at Prairie State
Far-Side / NE Corner

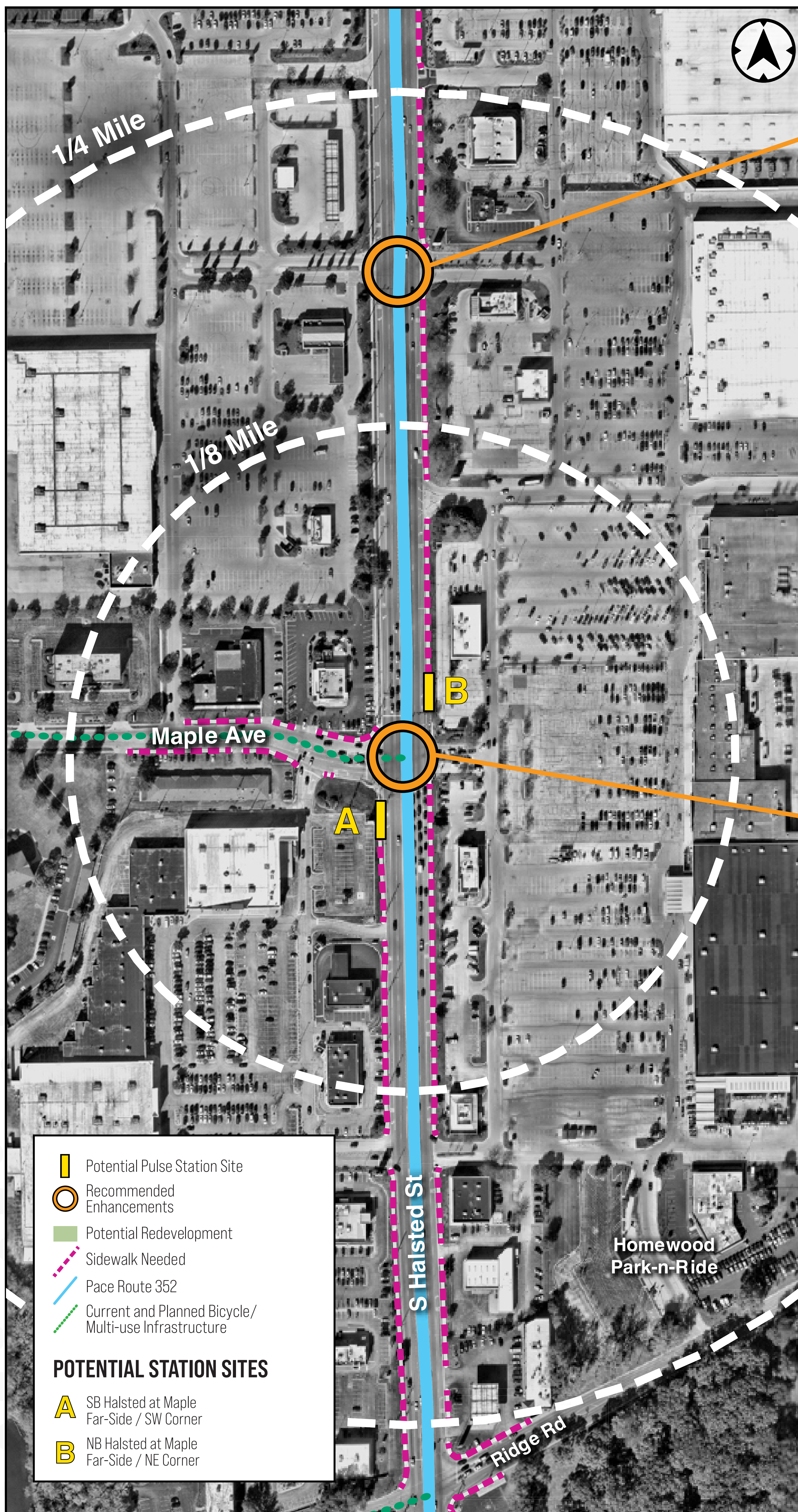
PEDESTRIAN IMPROVEMENTS

- Add crosswalks, curb ramps, and pedestrian signals to all four legs at Halsted St and Vollmer Rd

- Add high-visibility crosswalks and curb ramps to north and west legs
- Add pedestrian refuge island along north leg
- Install a rapid-flashing beacon system on Halsted St to facilitate safe pedestrian access to Prairie State College

Potential Infrastructure Improvements

S Halsted Street & Maple Avenue



PEDESTRIAN IMPROVEMENTS

- Add high-visibility crosswalks to all legs
- Add curb ramps and pedestrian signals to north, east and south legs
- Convert existing medians into pedestrian refuge islands on all legs

TRANSIT ENHANCEMENTS

- Evaluate potential of transit queue jump lane for northbound and southbound buses approaching Park Place Plaza driveway

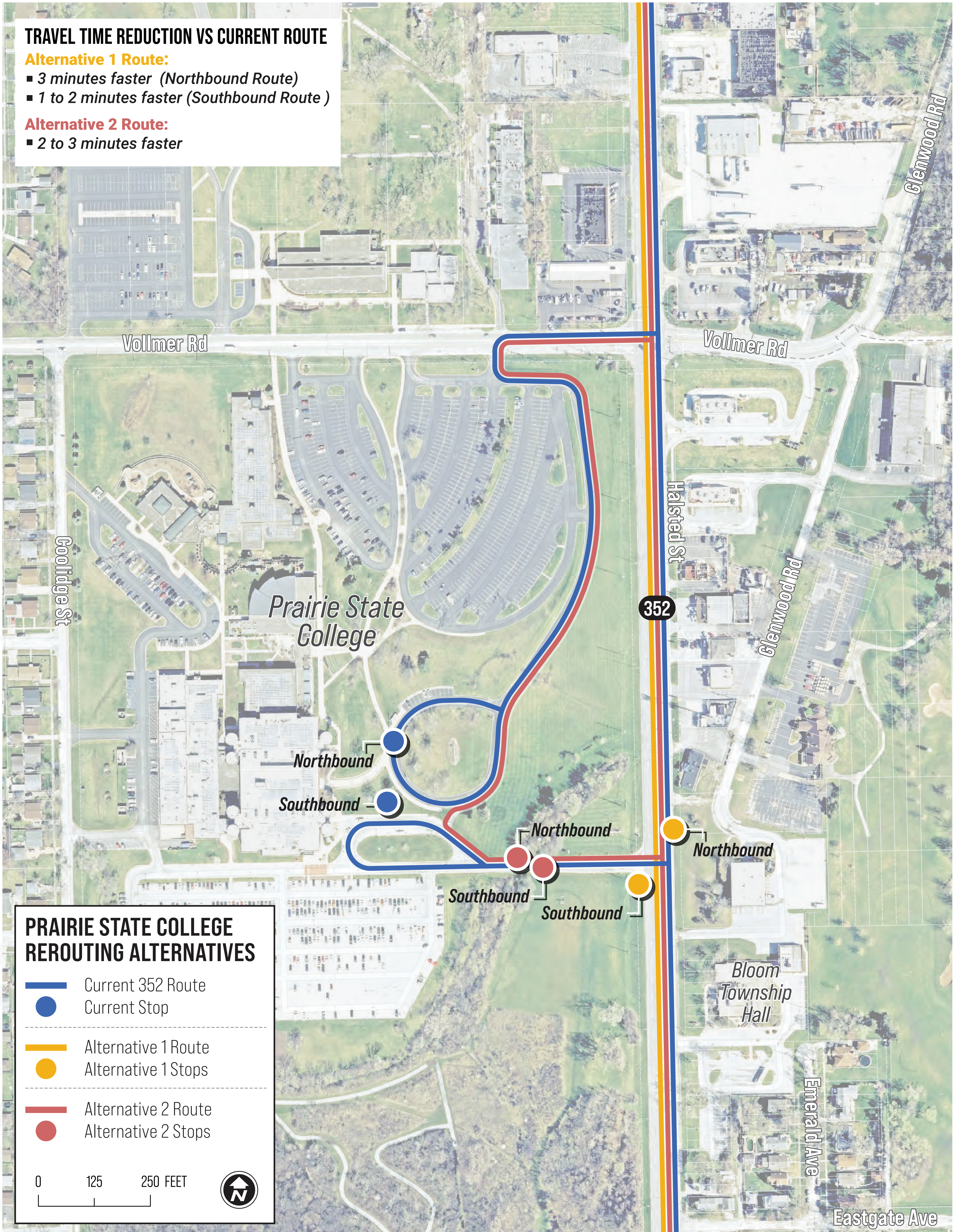
PEDESTRIAN IMPROVEMENTS

- Add high-visibility crosswalks to all legs
- Add curb ramps and pedestrian signals to north and east legs
- Reduce curb corner radii on northwest and southwest corners

TRANSIT ENHANCEMENTS

- Evaluate potential of a transit queue jump lane for northbound and southbound buses approaching Maple Ave

Prairie State College Rerouting Alternatives



Opportunity Sites



Opportunity Sites

How were the sites selected?

- 1 SIZE OF SITE**
half-acre or larger
Able to accomodate impactful residential or commercial uses
- 2 SITE OWNERSHIP**
municipality-owned, or single private ownership
To facilitate easier acquisition and consolidation, lowering costs
- 3 EXISTING LAND USE**
vacant or underutilized lots
To limit development cost of demolition and fill gaps along corridor
- 4 EXISTING ZONING**
commercial, open space, or mixed-use zoning
To minimize the need for zoning changes and lowering barriers to development
- 5 MARKET DEMAND**
clear need for residential or commercial uses
Sites with clear demand for new uses, filling existing market gaps
- 6 PROMOTES PACE RIDERSHIP**
near existing Pace stops
Sites near existing or proposed Pace Pulse stops, supporting ridership
- 7 ELIGIBLE INCENTIVES**
availability of funding sources
Sites within boundaries of funding programs that can help lower costs

Opportunity Site Analysis

We want to hear from you!

What types of residential development would you like to see on these sites?

Townhouse, duplex, triplex



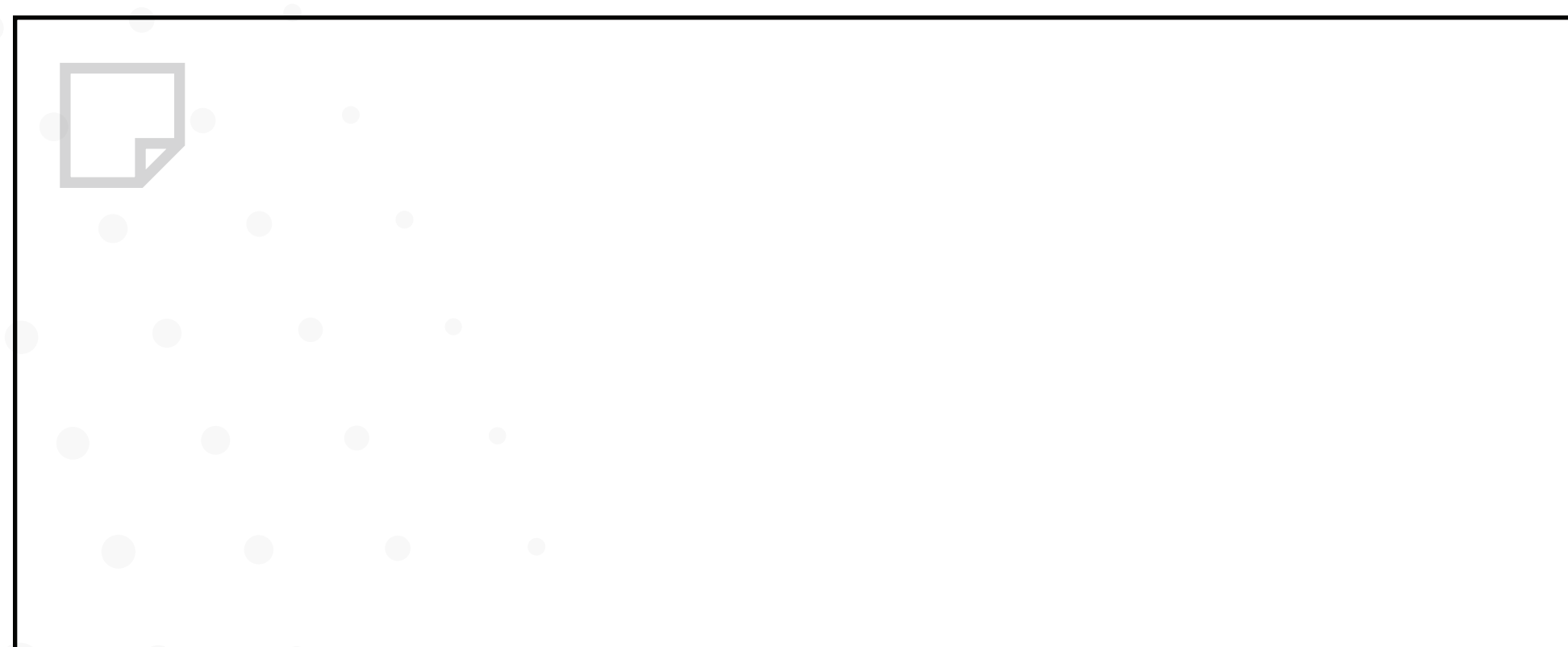
Four to six-flats



Apartment or condominiums



Mixed-use



Opportunity Site Analysis

We want to hear from you!

What types of non-residential development would you like to see on these sites?

Commercial: Retail

Example: stores, restaurants

A large empty rectangular box with a thin black border. In the top left corner, there is a small, light gray icon of a document with a folded corner, indicating a text input area.

Commercial: services

Example: salons, fitness, medical

A large empty rectangular box with a thin black border. In the top left corner, there is a small, light gray icon of a document with a folded corner, indicating a text input area.

Industrial or business center

Example: job centers

A large empty rectangular box with a thin black border. In the top left corner, there is a small, light gray icon of a document with a folded corner, indicating a text input area.

Social services or institutional

Example: resource center, civic use

A large empty rectangular box with a thin black border. In the top left corner, there is a small, light gray icon of a document with a folded corner, indicating a text input area.

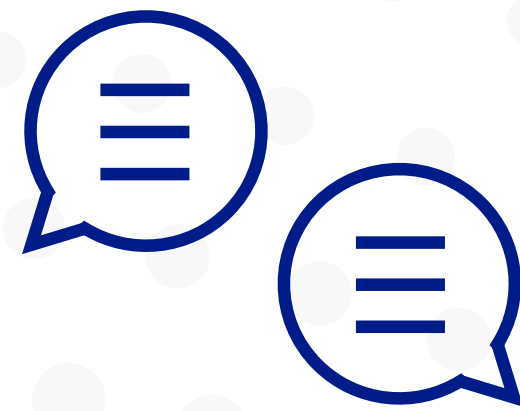
Public Engagement Overview

Since the start of the project, the team has created opportunities to engage with the community by:



DEVELOPING

a project website



CONDUCTING

stakeholder interviews with Chicago Heights, Homewood, SSMMA, Active Trans, IDOT



CREATING

a community context survey on land use, transportation, bicycle and pedestrian improvements



ORGANIZING

pop-up events throughout the corridor to obtain public input on infrastructure features

The project team organized three pop-up events within the corridor to engage with community members and obtain feedback on a Community Context Survey.



Prairie State College

April 29, 2024



Homewood Farmers Market

June 29, 2024



Harvey City Hall SWAG Event

August 21, 2024

Community Context Survey Results

A total of 147 survey responses were collected: 137 were gathered at the pop-ups, and 10 were submitted online.

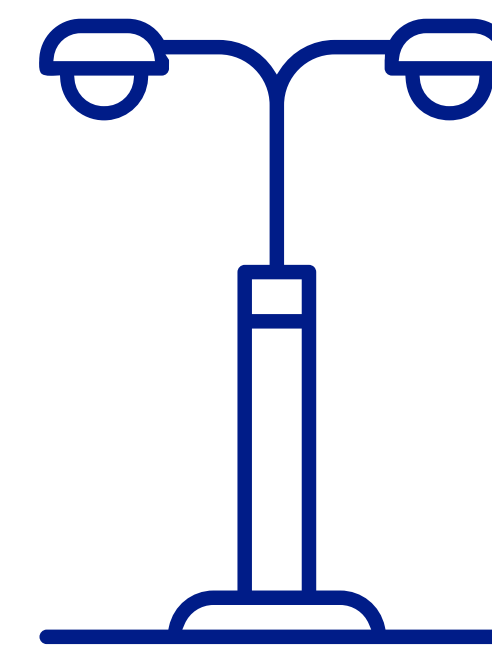
Top Transportation Safety Concerns



13%

Lack of Appropriate Pedestrian Infrastructure

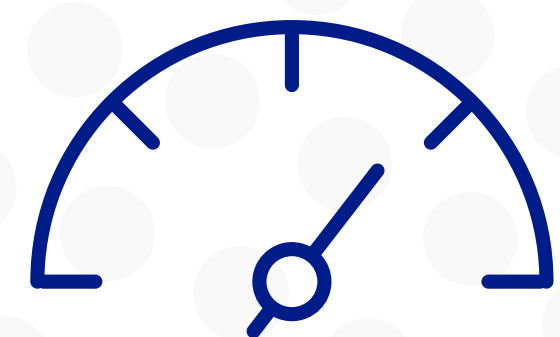
“Traffic is heavy and bike and pedestrian safety features almost nonexistent. It is scary.”



6%

Lack of Lighting

“For years, there were blackouts. The street grid didn’t have lights working, and when the lights went back on, they were far too dark.”



10%

Lack of Speed Regulation

“The speed of vehicles is concerning. It’s used as a highway speed up and down the corridor”



5%

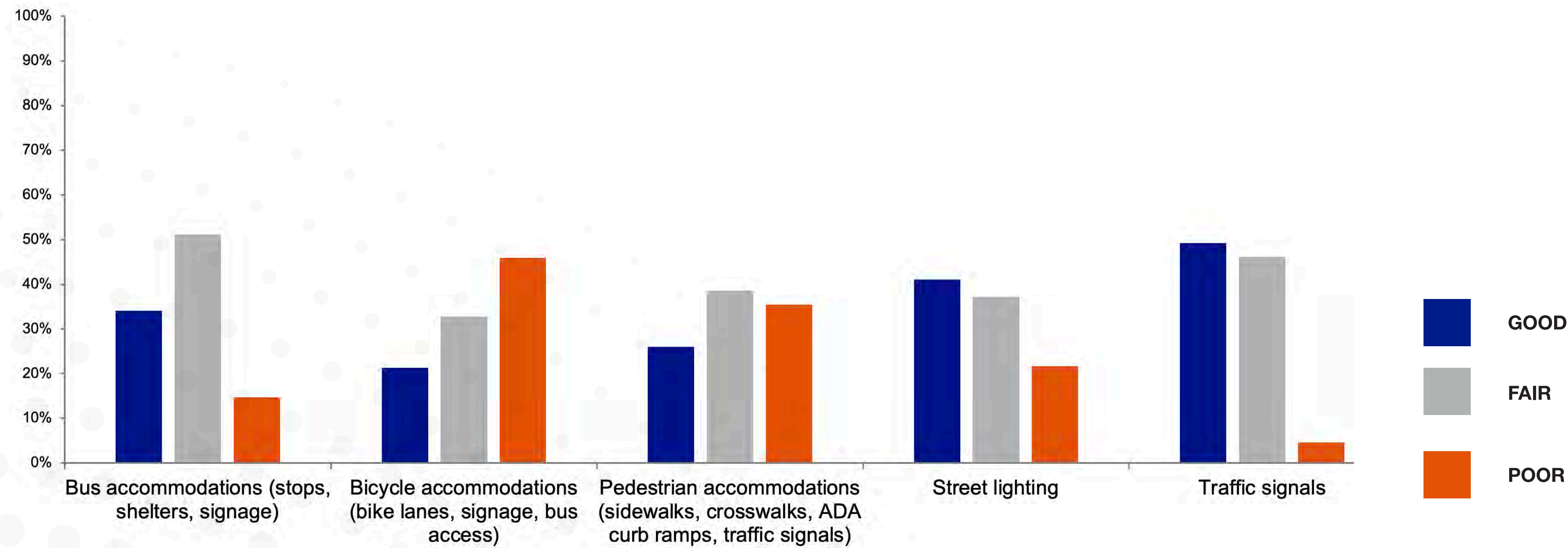
Lack of Appropriate Bike Infrastructure

“Very scary crossing on foot or bike, so we exclusively drive.”

Community Context Survey Results

A total of 147 survey responses were collected: 137 were gathered at the pop-ups, and 10 were submitted online.

Infrastructure Conditions Rating



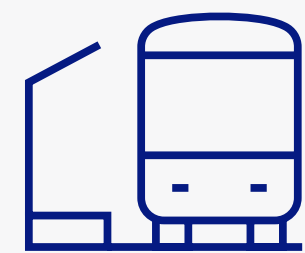
Which infrastructure features do you think need to be improved?

Place a sticky note with your comments on the board.

TAKEAWAYS



Bike and pedestrian infrastructure consistently rated poor, but street lighting and traffic signals were given a rating of fair and above.



While ratings for bus infrastructure were the most mixed of all the features, some respondents noted shelters and bus stops need to be improved.

Slide Show

Welcome

PUBLIC MEETING

Pace Far South Halsted Corridor Study

March 4, 2024

Meeting Goals

PROVIDE an overview of the project

SHARE findings about the corridor as it is today

PRESENT community feedback to date and recommendations on potential infrastructure improvements

GATHER input on development sites and vision for final plan

SUMMER 2024 SURVEY DATA

The **majority** of the respondents live near the study's surrounding area.

41%

live in Harvey

24%

live in Homewood

7%

live in Flossmoor



In collaboration with
rta

Far South Halsted Corridor Study



Pace and RTA are conducting a study to examine land use and identify potential transportation, bicycle, and pedestrian infrastructure improvements along the South Halsted Street corridor between the Pace Harvey and Chicago Heights Transportation Centers.



To learn more, scan the QR code to visit the project website.

Homewood Farmers Market

SUMMER 2024 SURVEY DATA

56%

37%

AND



of the respondents were **residents** of the surrounding area



of the respondents were **students** from the surrounding area

SUMMER 2024 SURVEY DATA

68%

of the respondents **travel frequently**
through the corridor



Be sure to visit all exhibits.

Learn more and provide your input.



pace
Corridor Study



pace and RTA are conducting a study to examine land use and identify potential transportation improvements for bicycle, and pedestrian along the South Halsted Corridor between the East Halley and Chicago Streets.



To learn more, scan the QR code to visit the project website.

White folding table with blue informational materials, including brochures and circular graphics, and a small yellow cup.



Homewood Farmers Market

SUMMER 2024 SURVEY DATA

46%

37%

AND / OR



use the corridor
to go shopping



use the corridor
to go to school

SUMMER 2024 SURVEY DATA

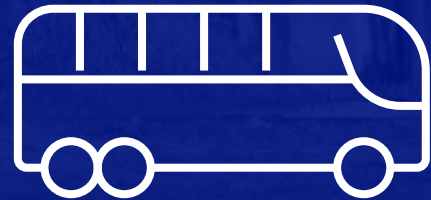
84%




of the respondents travel
the corridor mostly by **car**

SUMMER 2024 SURVEY DATA

31%



of the respondents travel
the corridor by **bus**

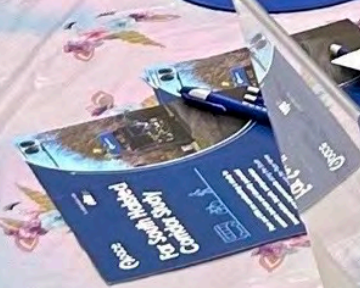


We want to hear from you.
Fill out a comment sheet before you leave.



Pace and RTA are conducting a study to examine land use and identify potential transportation, bicycle, and pedestrian infrastructure improvements along the South Halsted Street corridor between the Pace Harvey and Chicago Heights Transportation Centers

To learn more, scan the QR code to visit the project website.



City of Harvey SWAG Event



Have a question or comment?

Discuss it with the project team.

Peer Café

pace

pace
Far South
Hunted
for Study





**Thank you for attending
today's public meeting!**

Interactive Roll Plot Map

Map Chips

Large roll plot map will include existing Pace stops and proposed Pace stations. Meeting attendees can place a map chip of the type of infrastructure feature they would like to see within the corridor.



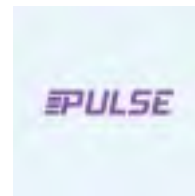
Bike Infrastructure



Pedestrian Infrastructure



Bus Stop Infrastructure



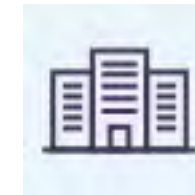
Pace Pulse Station



Residential Development



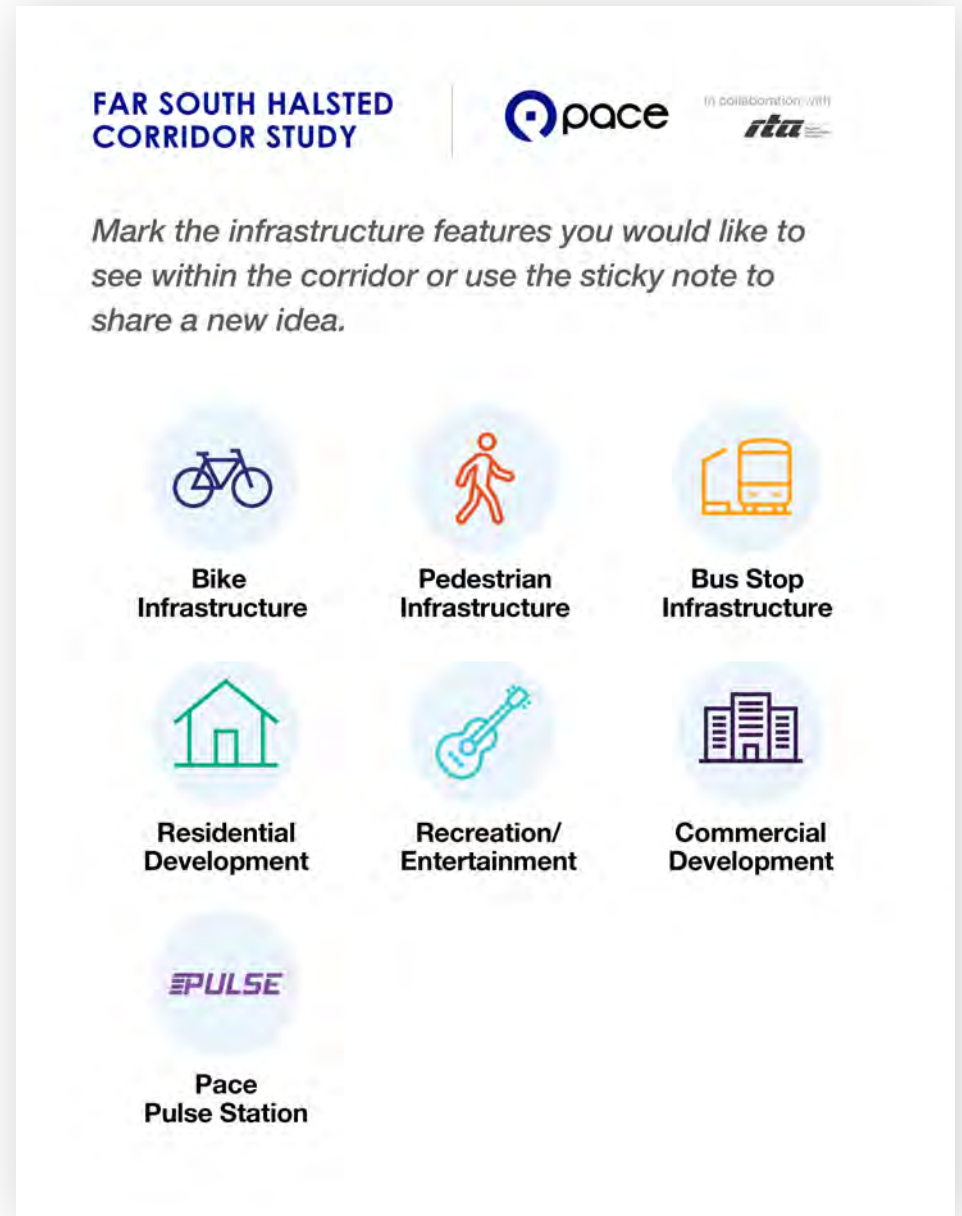
Recreation/ Entertainment



Commercial Development

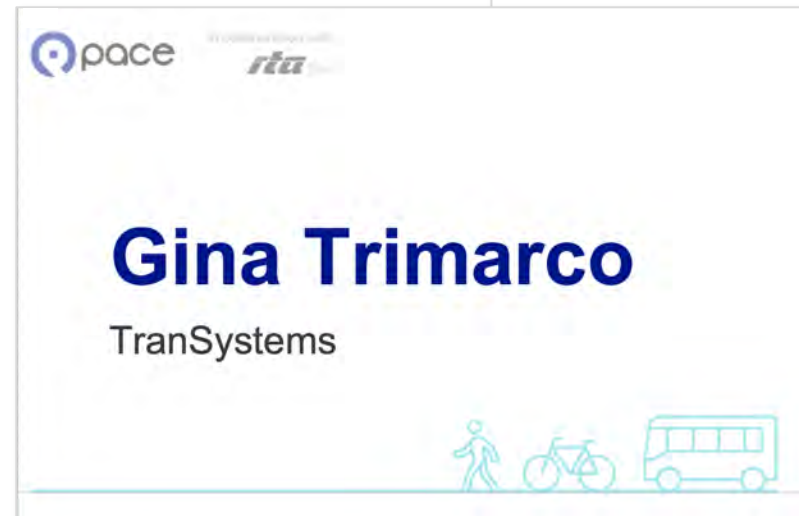
Table Sign

8.5" x 11", single-sided sign
for instructions



Experiential Materials

Name Tags



Stakeholder Compensation

Stakeholders can receive branded Pace giveaways as well as a Ventra ticket.

Snacks and beverages will also be provided.



Wayfinding

Welcome Sign

22" x 28"



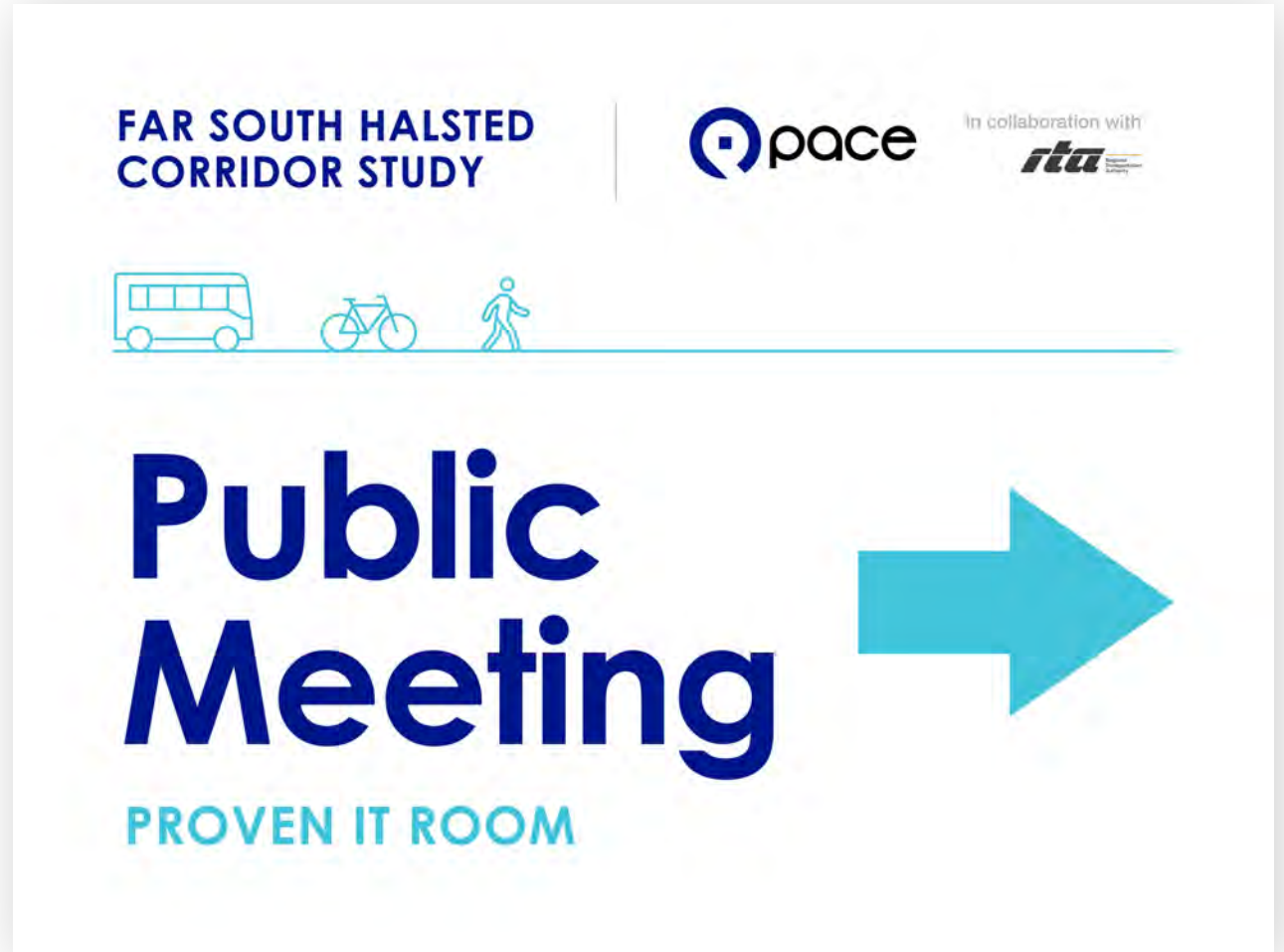
Door Sign

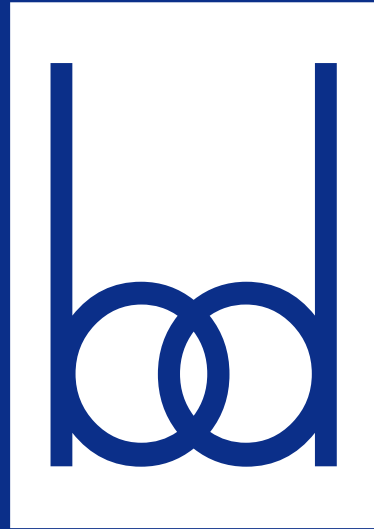
28" x 22"



Directional Sign

24" x 18"





BLUE DARING